

Monacan Indian Nation Tribute Park at Southwood

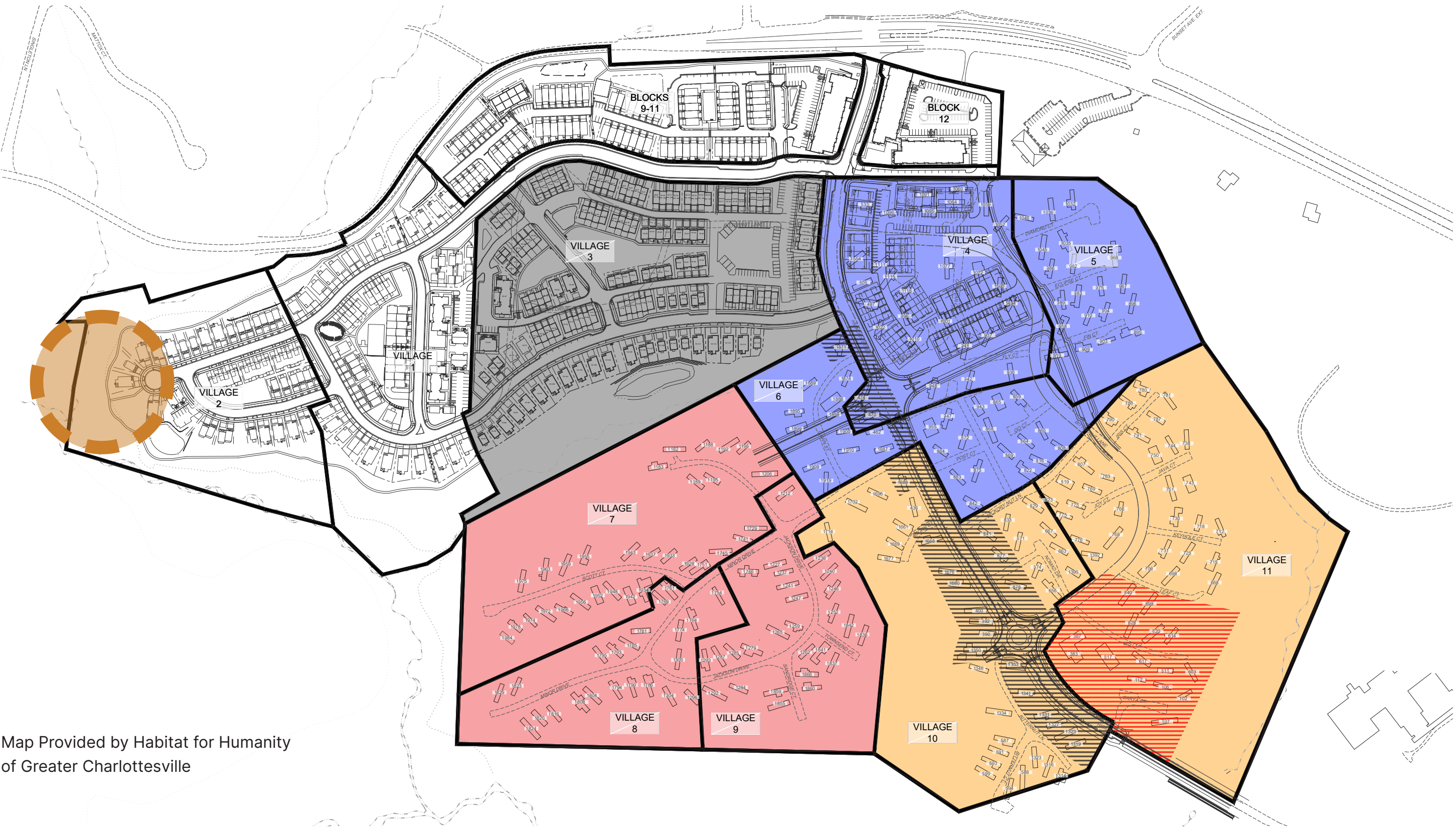
Community Meeting • January 2025



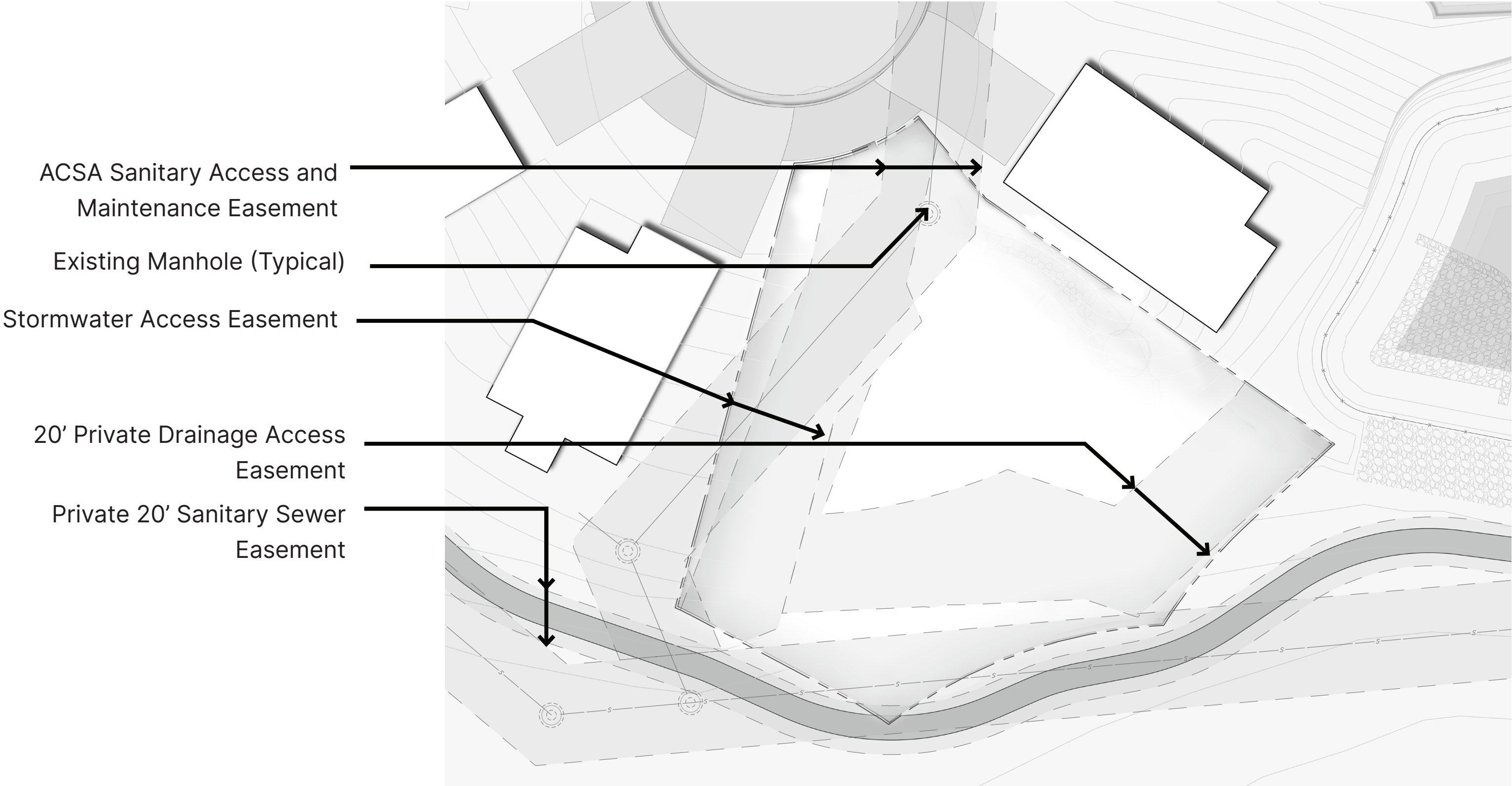
LINE AND GRADE

| | | | |
|----------------------------|-----------|----------------------|-----------|
| I. EXISTING | 3 | IV. MATERIALS | 17 |
| Location | | Trees | |
| Easements and Encumbrances | | Shrubs | |
| Opportunity | | Ground Cover | |
| Orientation | | Seating | |
| II. NARRATIVE | 8 | V. SIGNAGE | 22 |
| Inspiration | | Sign | |
| Interpretation | | Entering | |
| | | Leaving | |
| | | Tribute Wall | |
| III. LAYOUT | 11 | VI. FEEDBACK | 29 |
| Opportunity | | | |
| Considerations | | | |
| Park Elements | | | |
| Park Elements Detail | | | |
| Illustrated Section | | | |

I. EXISTING CONDITIONS

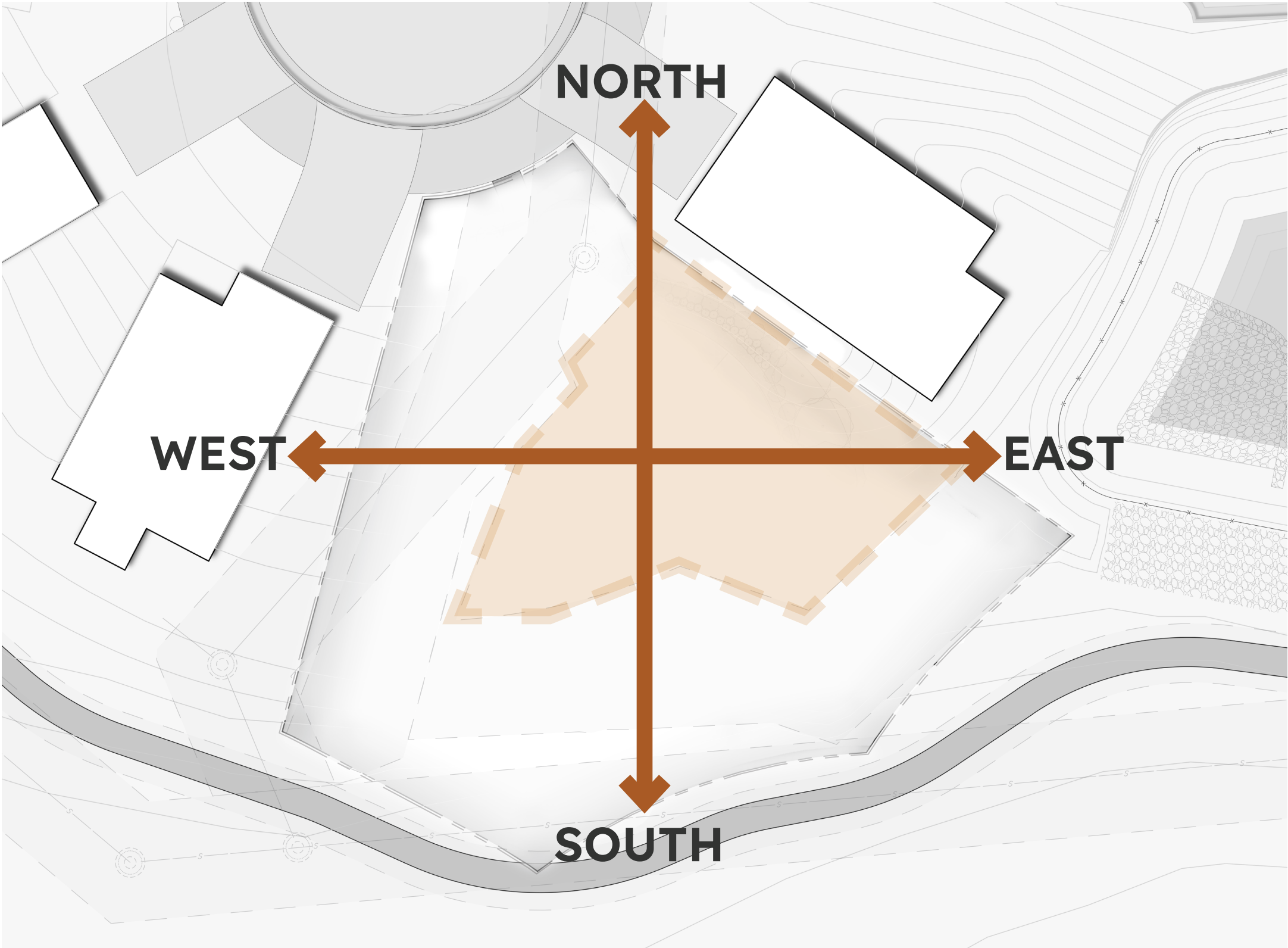


Map Provided by Habitat for Humanity of Greater Charlottesville



2,983 SF of unencumbered space





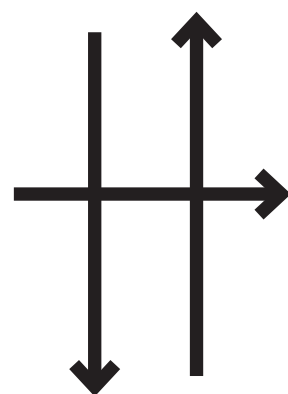
II.

NARRATIVE

The primary messages the Monacan people wish to communicate through the park are:

- We are still here**
- We are still strong**

Sign of the
Monacan
Indian Nation



Verse from the first section of “The Naming”
by Karenne Wood

The land speaks, its language arising
from its own geography—
the mountains’ hulked shapes
are blue whales, remembering
when they were undersea ridges,
and rivers are serpentine strands
hammered from silver, and dark trees
talk to the wind—weaving mortal lives,
drumbeats, pillars of smoke,
voices wavering into updraft,
the storyteller shifting the present.

Verse from the first section of “The Naming”
by Karenne Wood

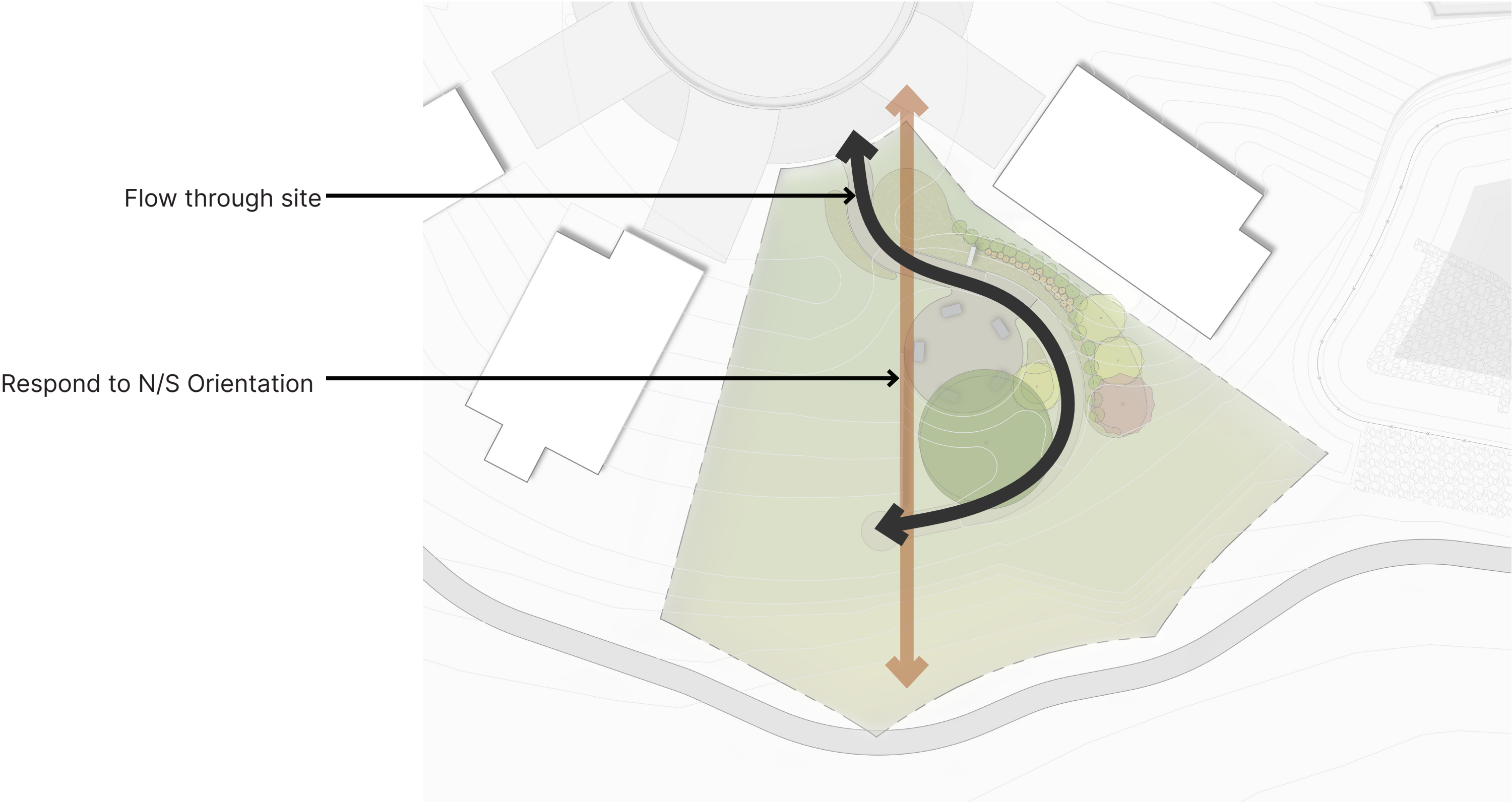
| | | |
|------------|---|--|
| Invitation | → | The land speaks, its language arising from its own geography— |
| Hillside | → | the mountains’ hulked shapes are blue whales, remembering |
| Wall | → | when they were undersea ridges, |
| Path | → | and rivers are serpentine strands |
| Tree | → | hammered from silver, and dark trees talk to the wind—weaving mortal lives, drumbeats, pillars of smoke, voices wavering into updraft, the storyteller shifting the present. |

III.

LAYOUT

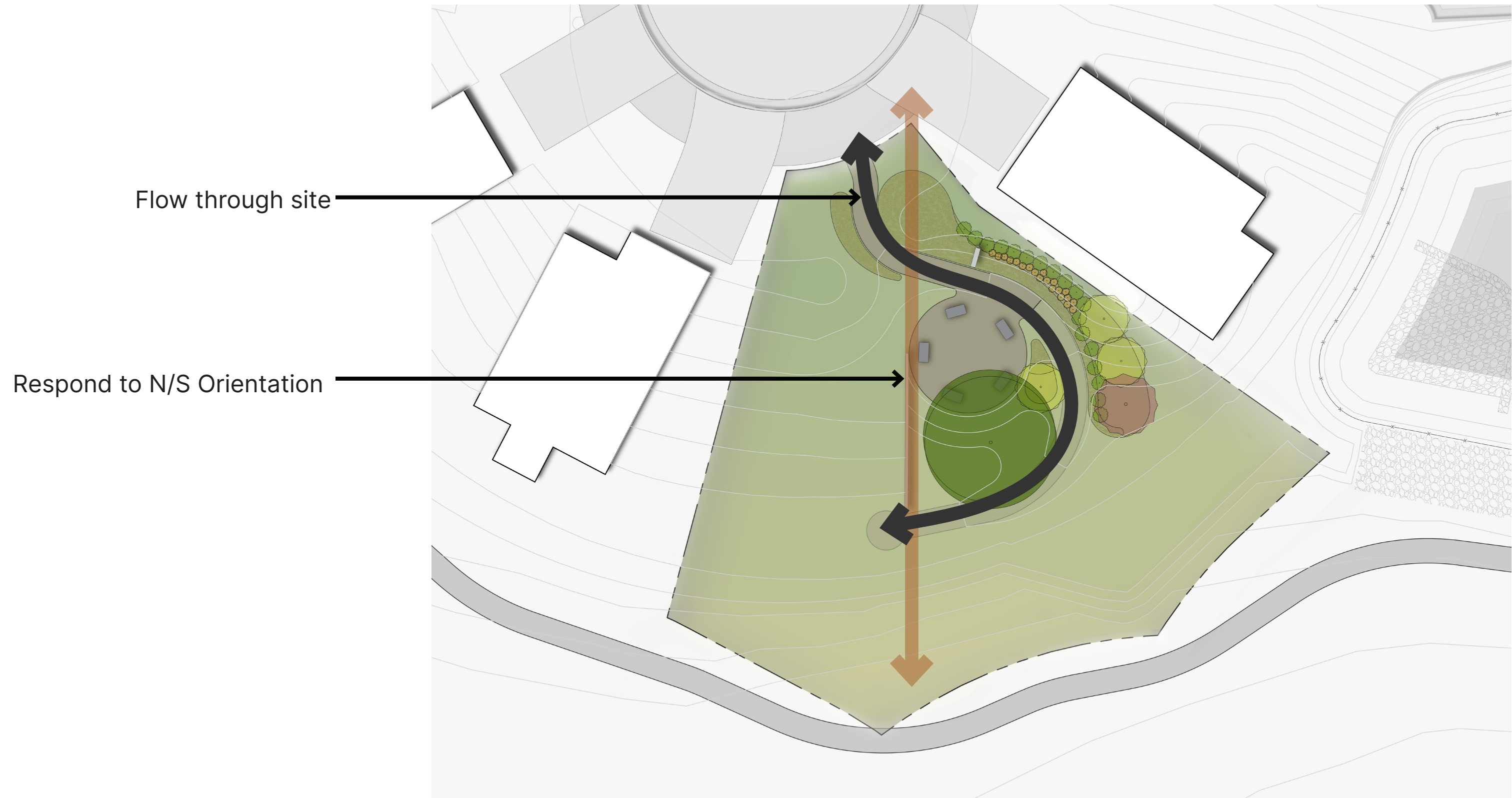
2,983 square feet of
unencumbered space

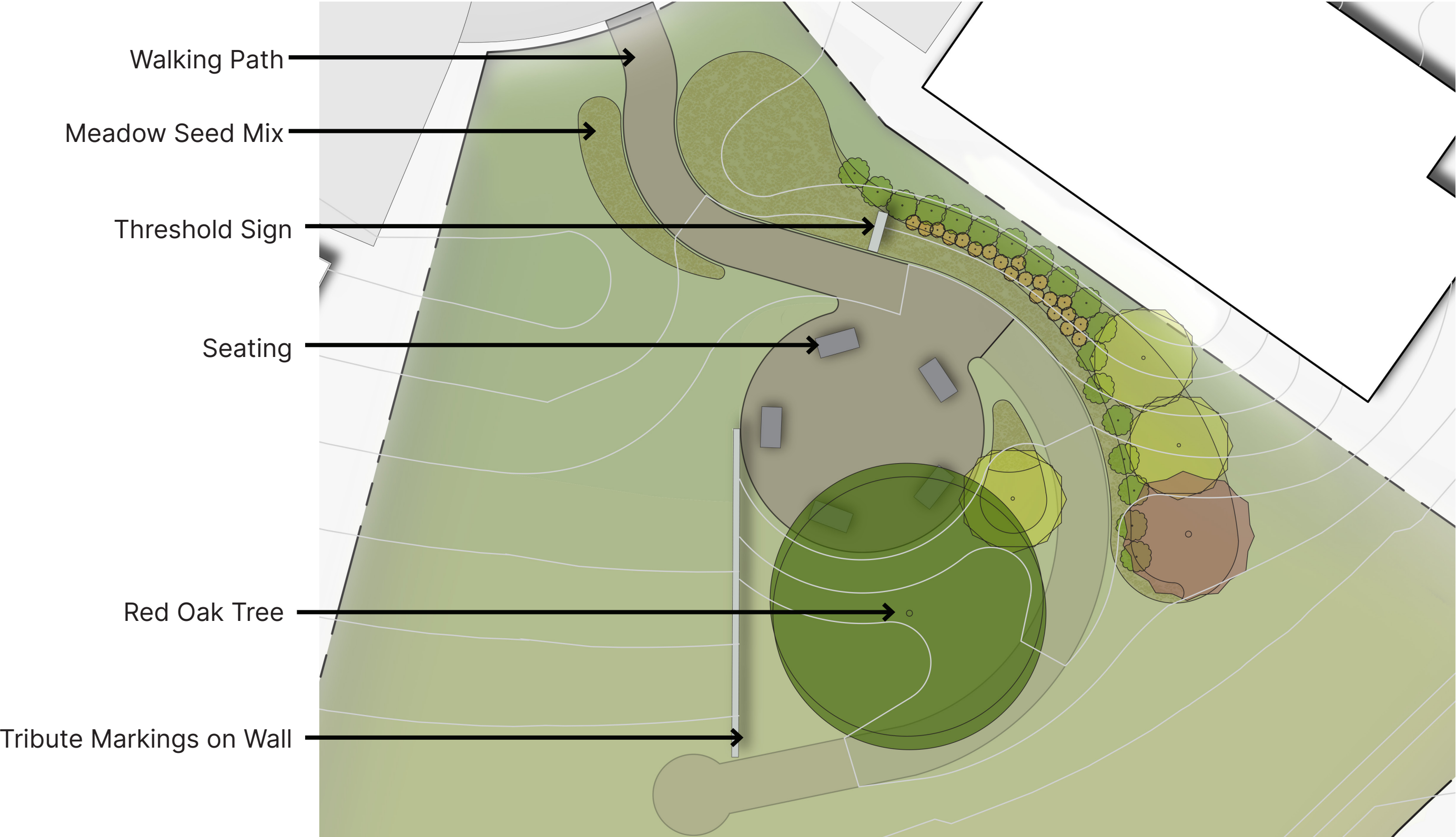


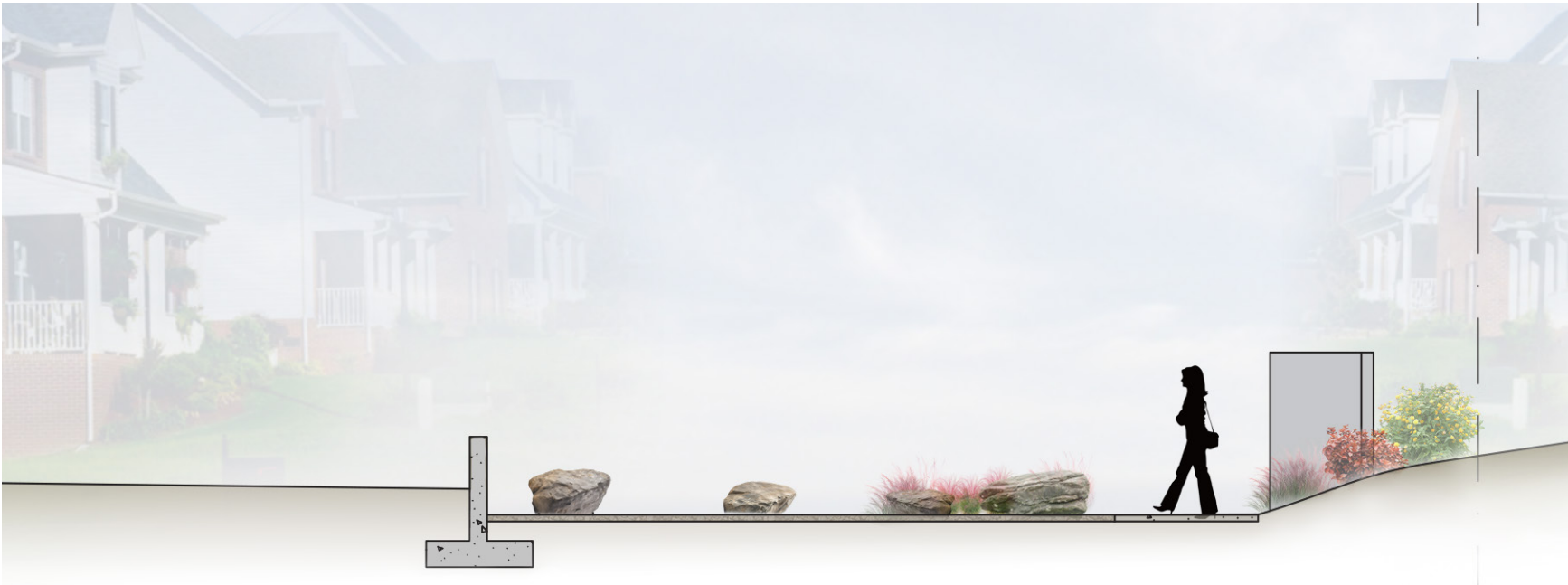


- Walking Path
- Threshold Sign
- Community Space
- Site Wall / Tribute





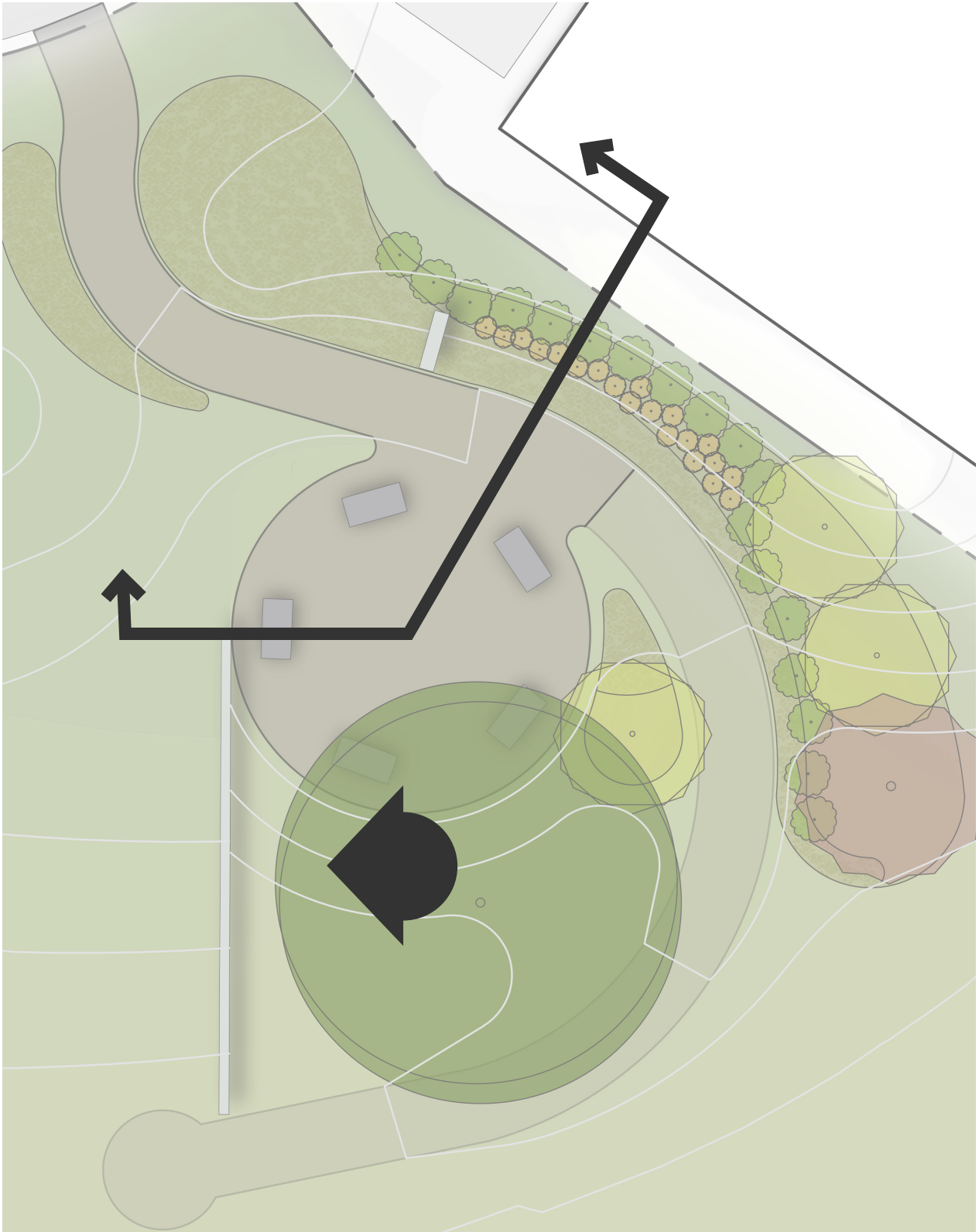




Site Section



Wall Elevation



IV.

MATERIALS



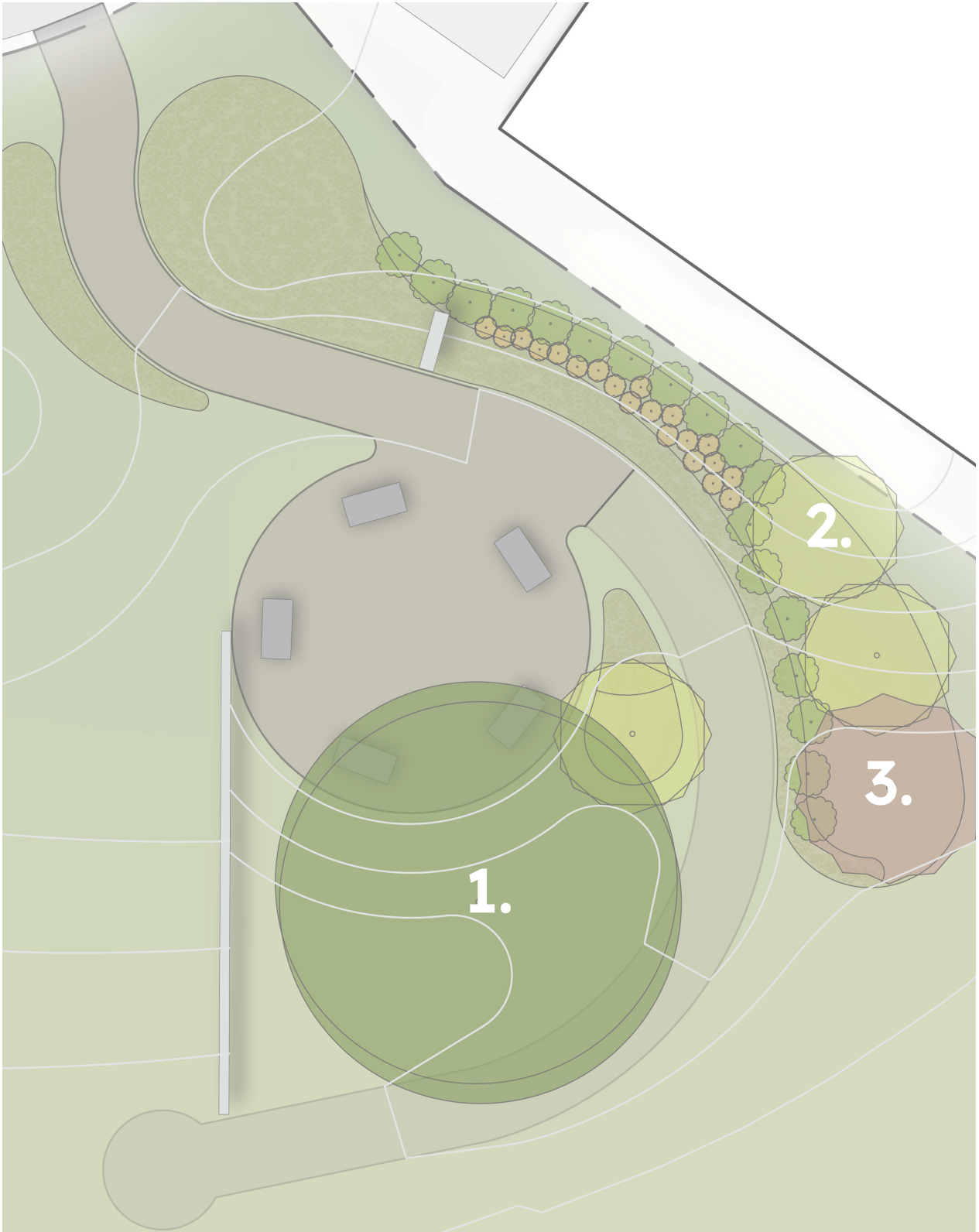
QUERECUS RUBRA



HAMAMELIS VIRGINIANA



CERCIS CANADENSIS 'APP. RED'





RHUS AROMATICA 'GRO-LOW'



CORNUS SERICEA 'KELSEY'



ASCLEPIAS TUBEROSA



AQUILEGIA CANADENSIS





ROCK SEATING



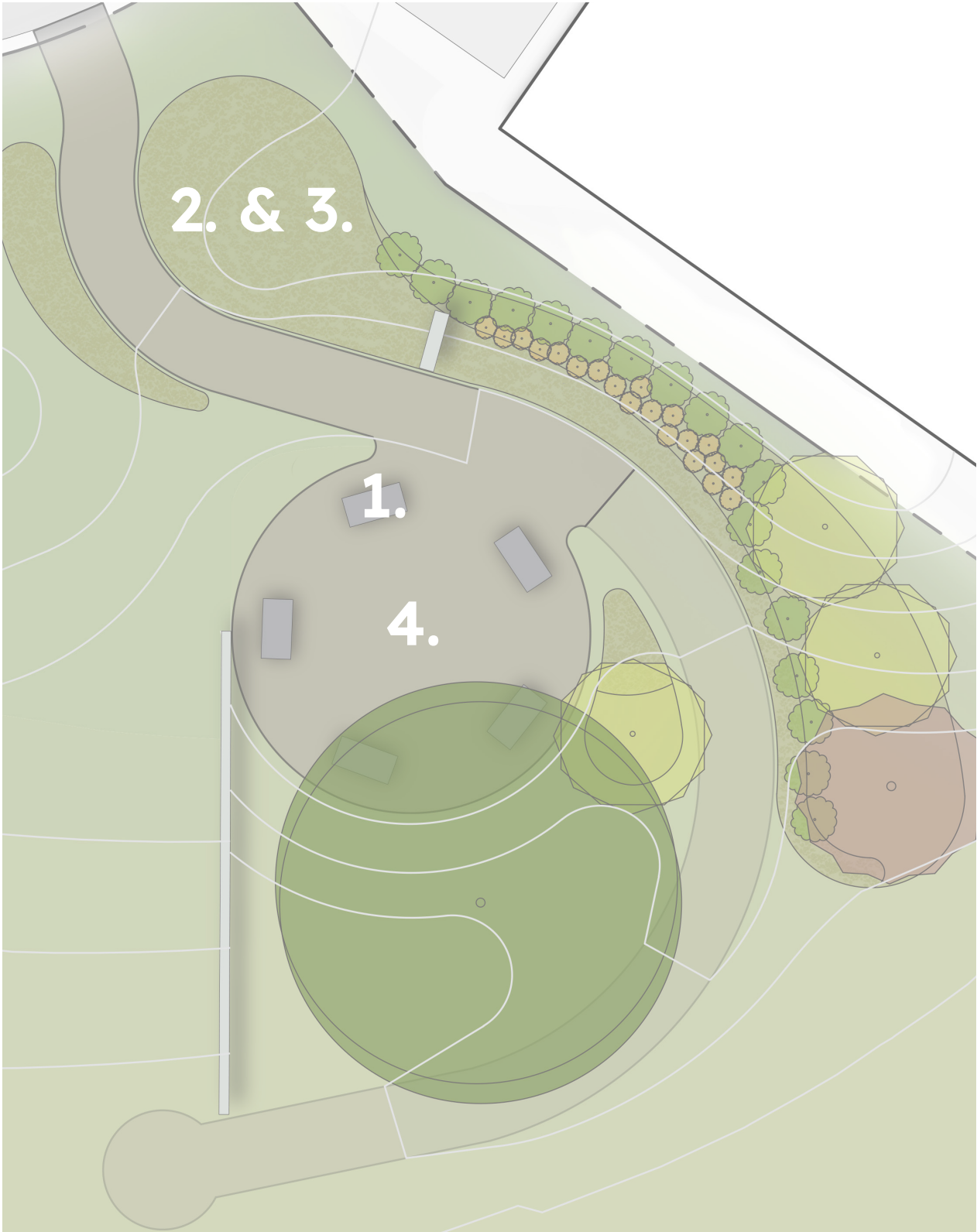
SOLIDAGO CANADENSIS

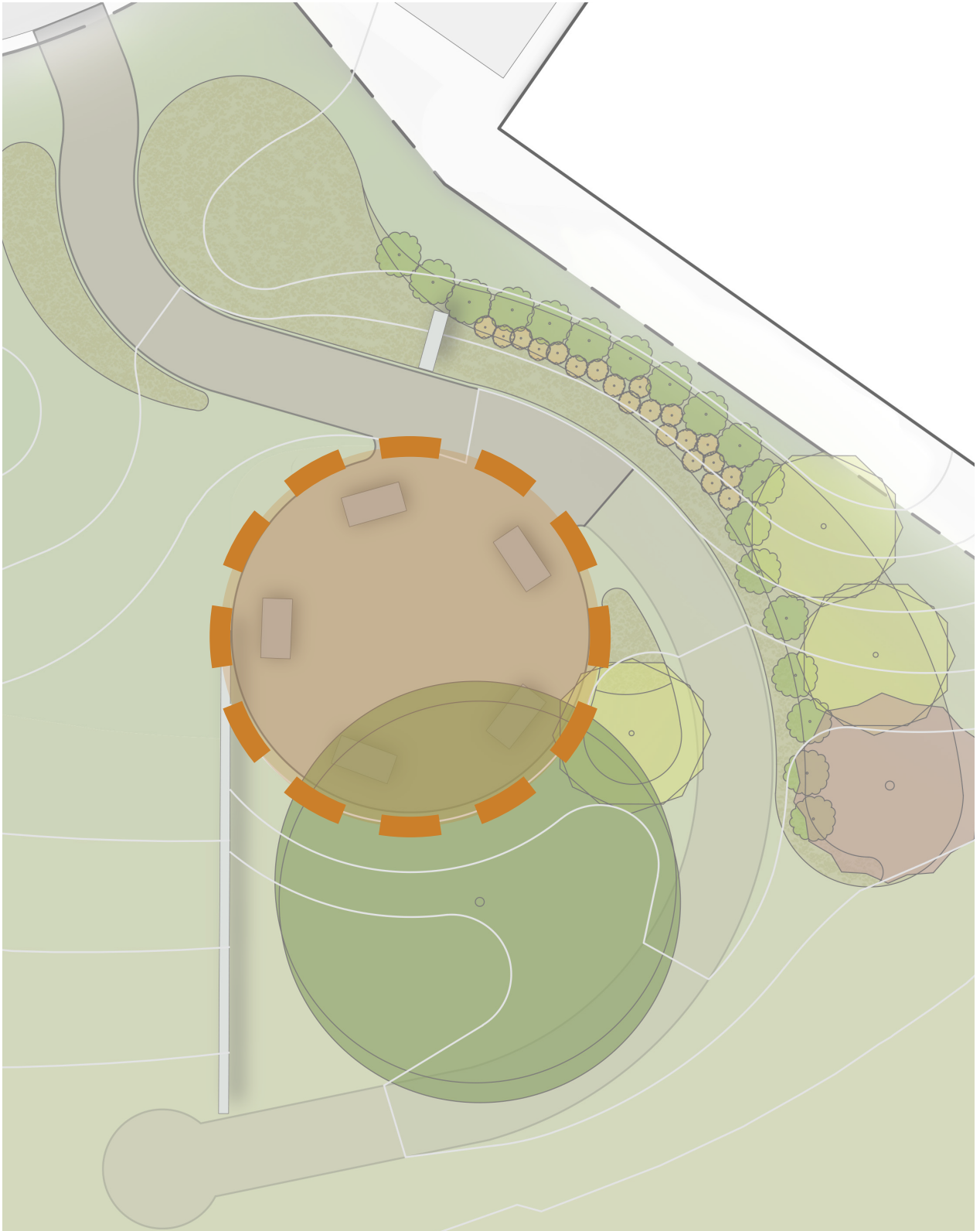


PANICUM VIRGATUM 'SHANANDOAH'

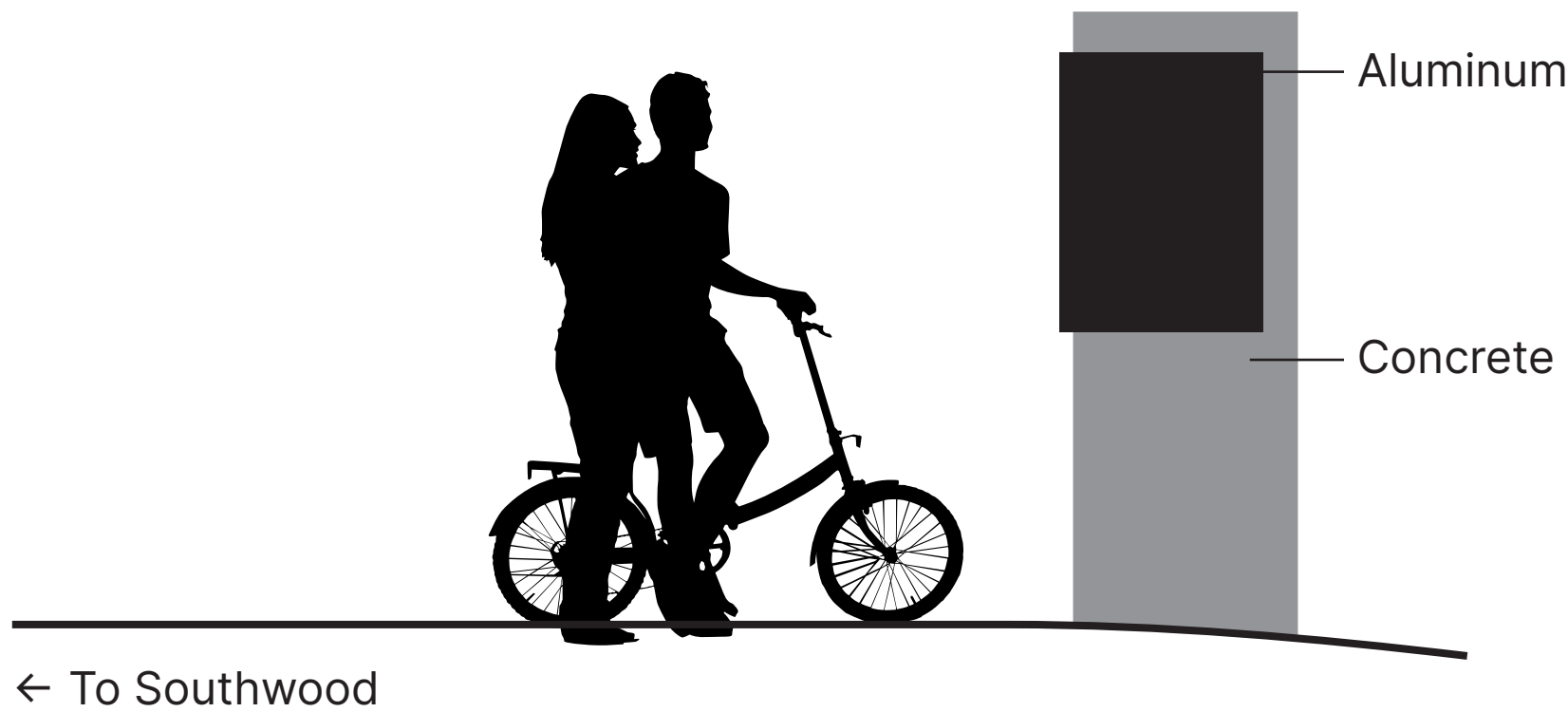


GRAVEL





V. SIGNAGE



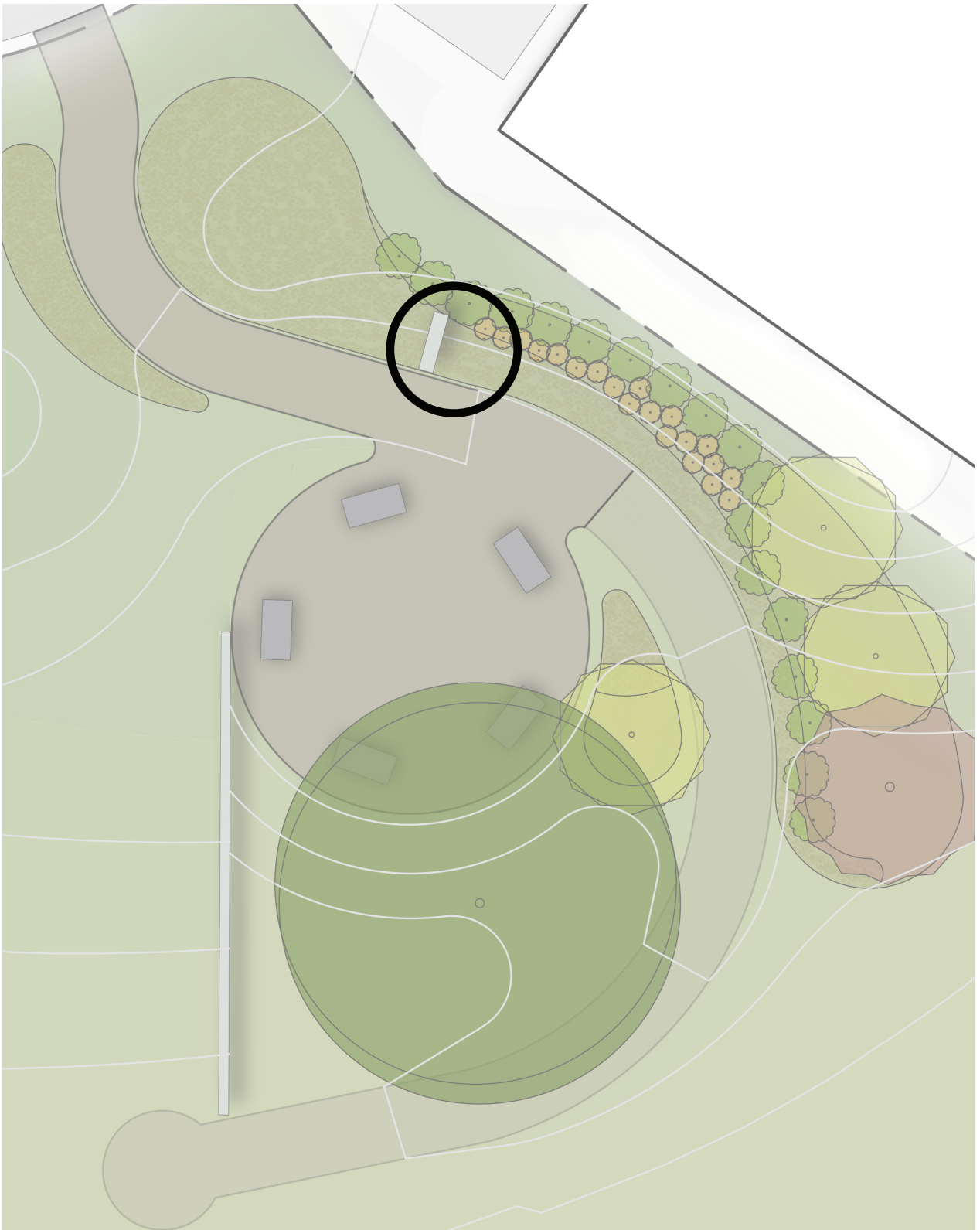
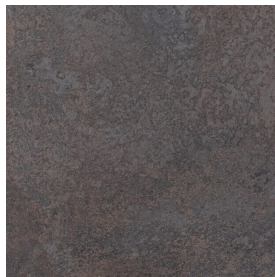
Paint Finishes

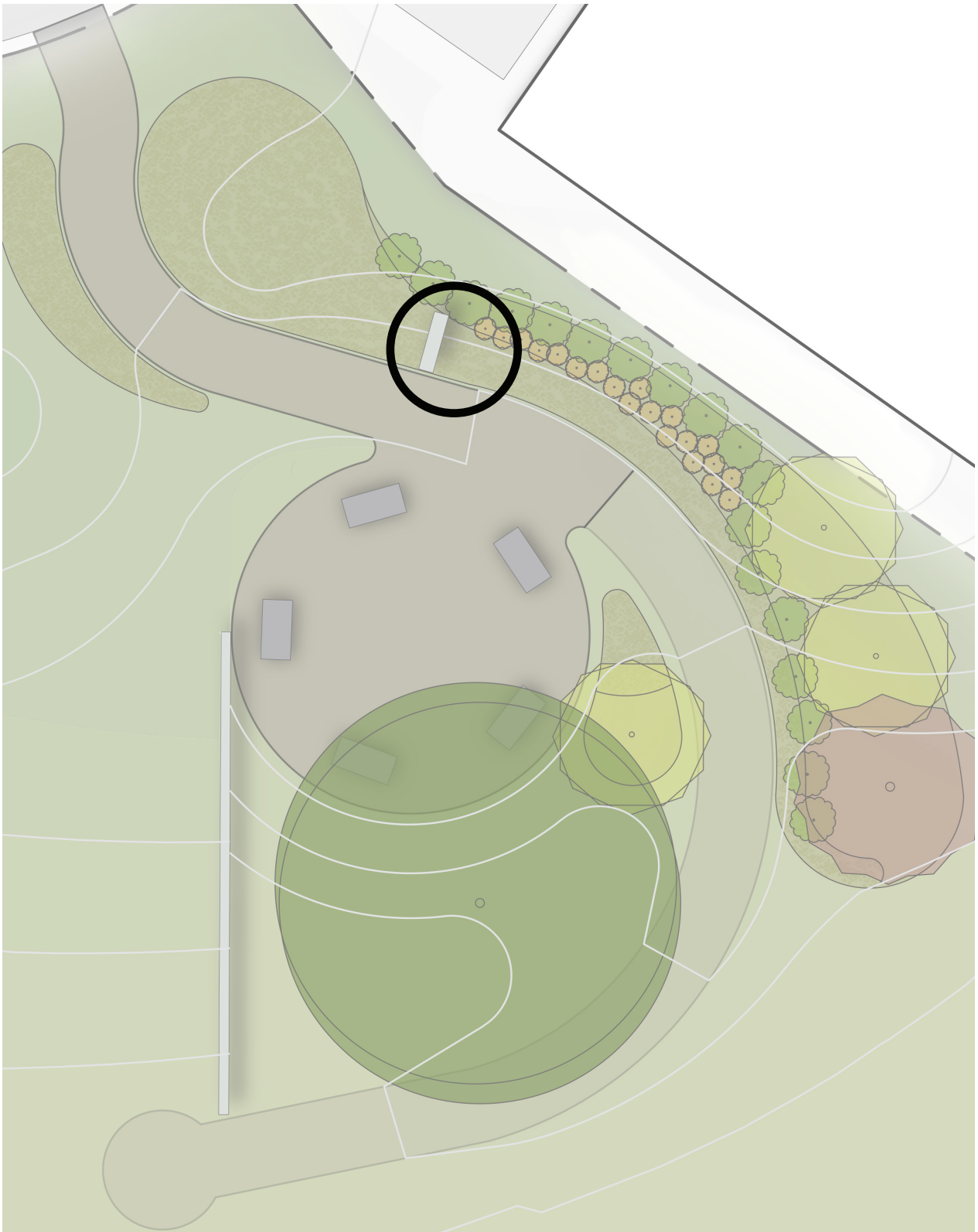
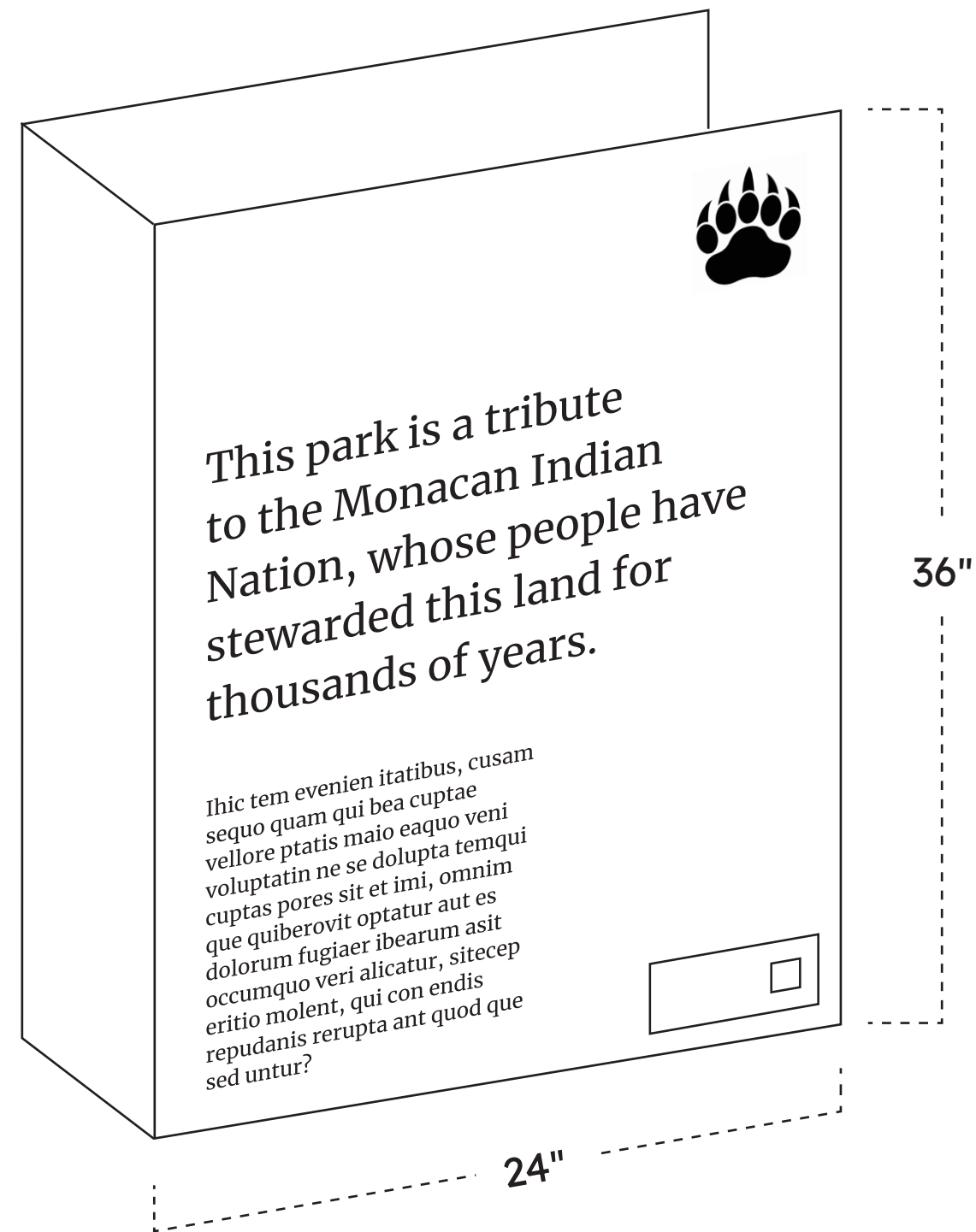
Iron Oxide

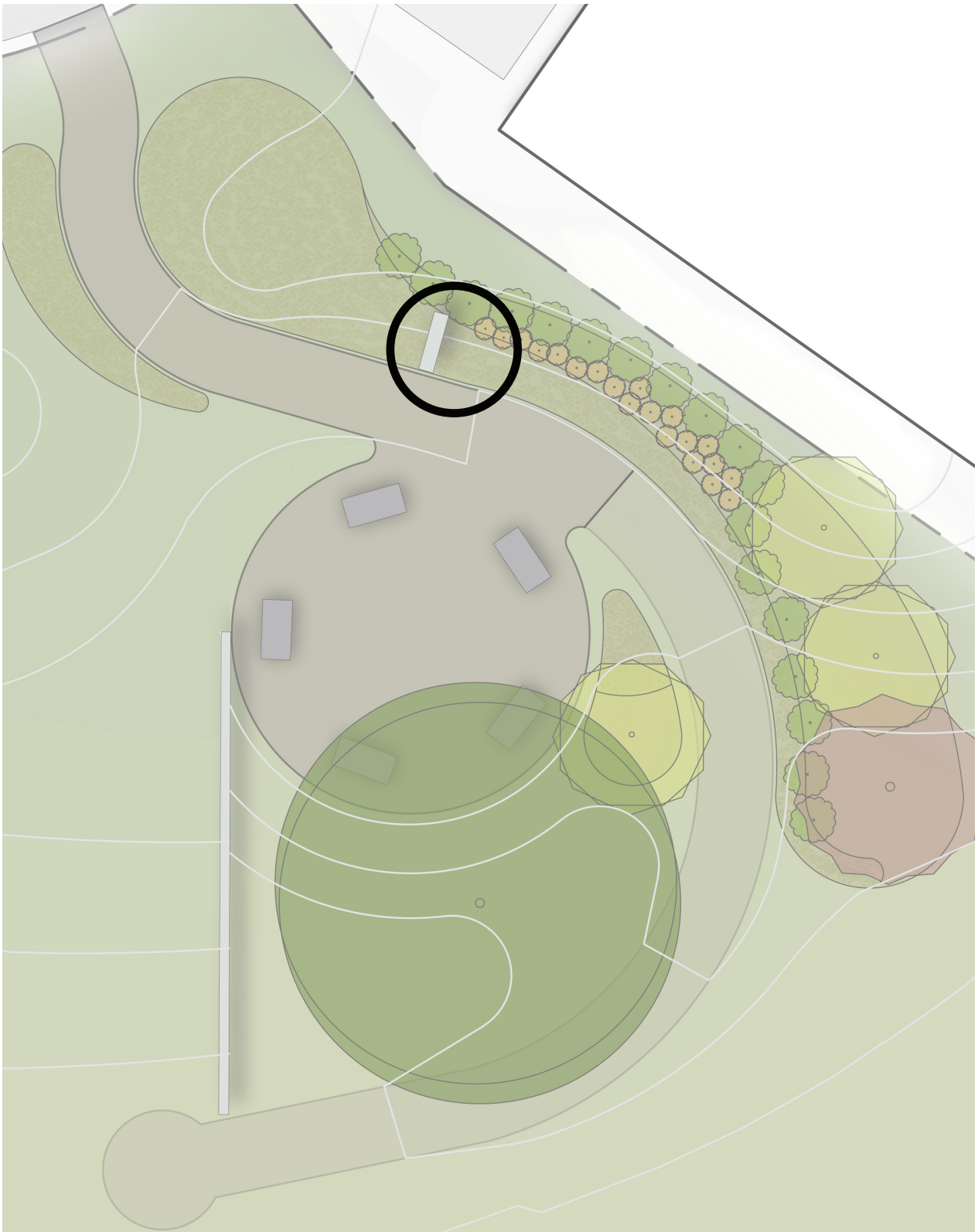
Copper

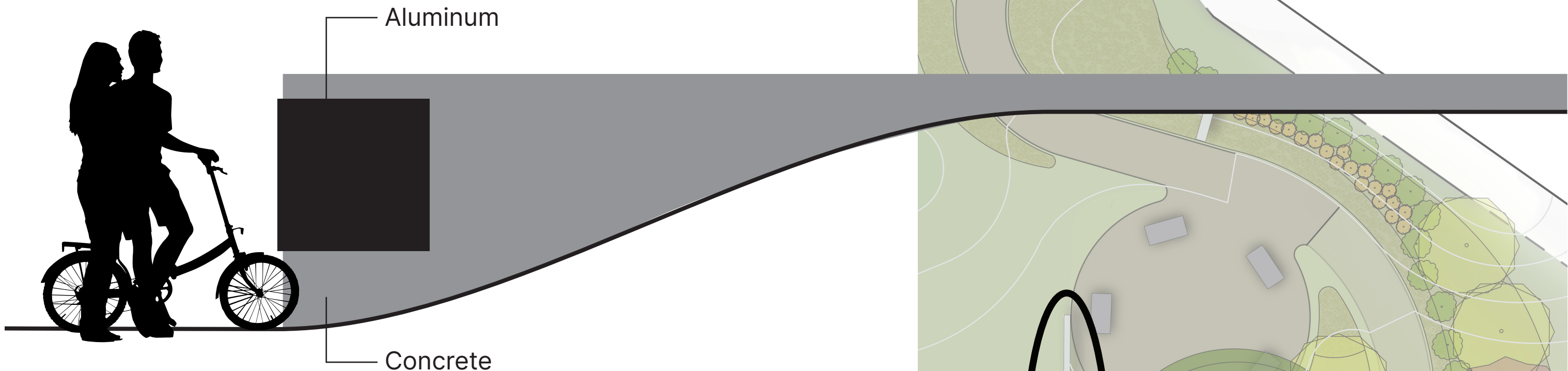
Structure

Board-formed Concrete







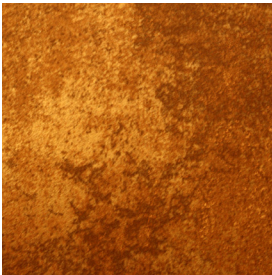


Paint Finishes

Iron Oxide



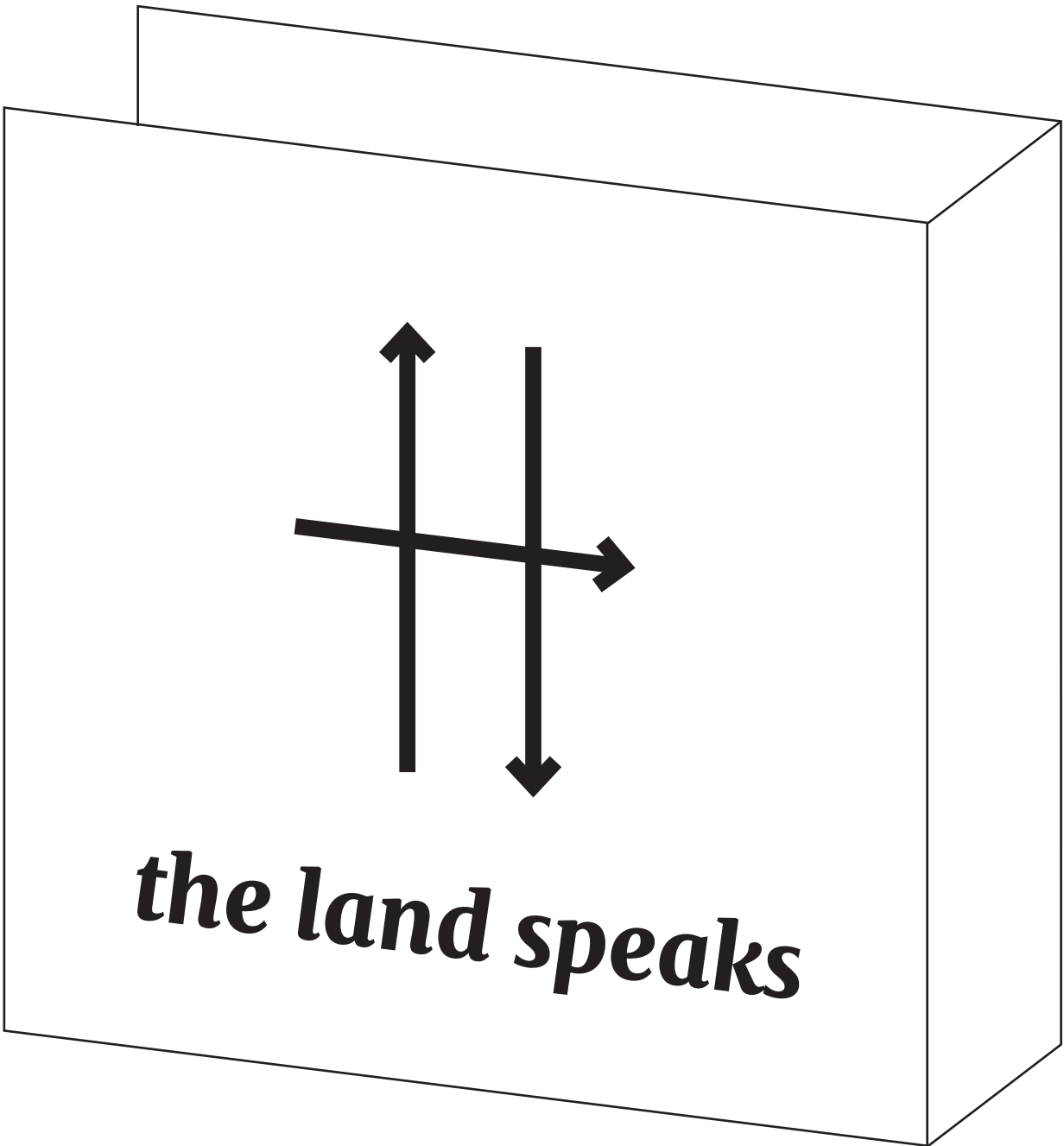
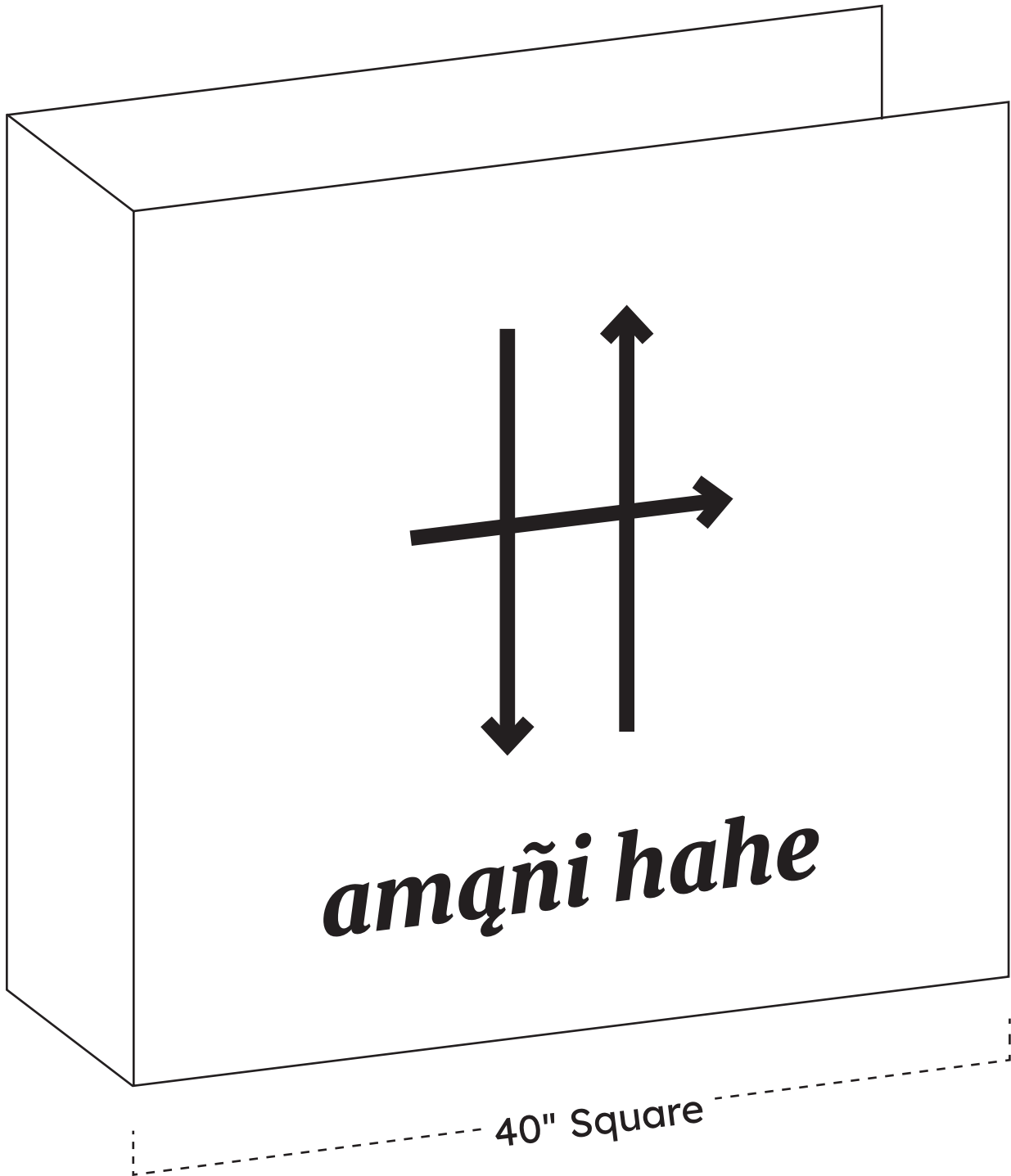
Copper

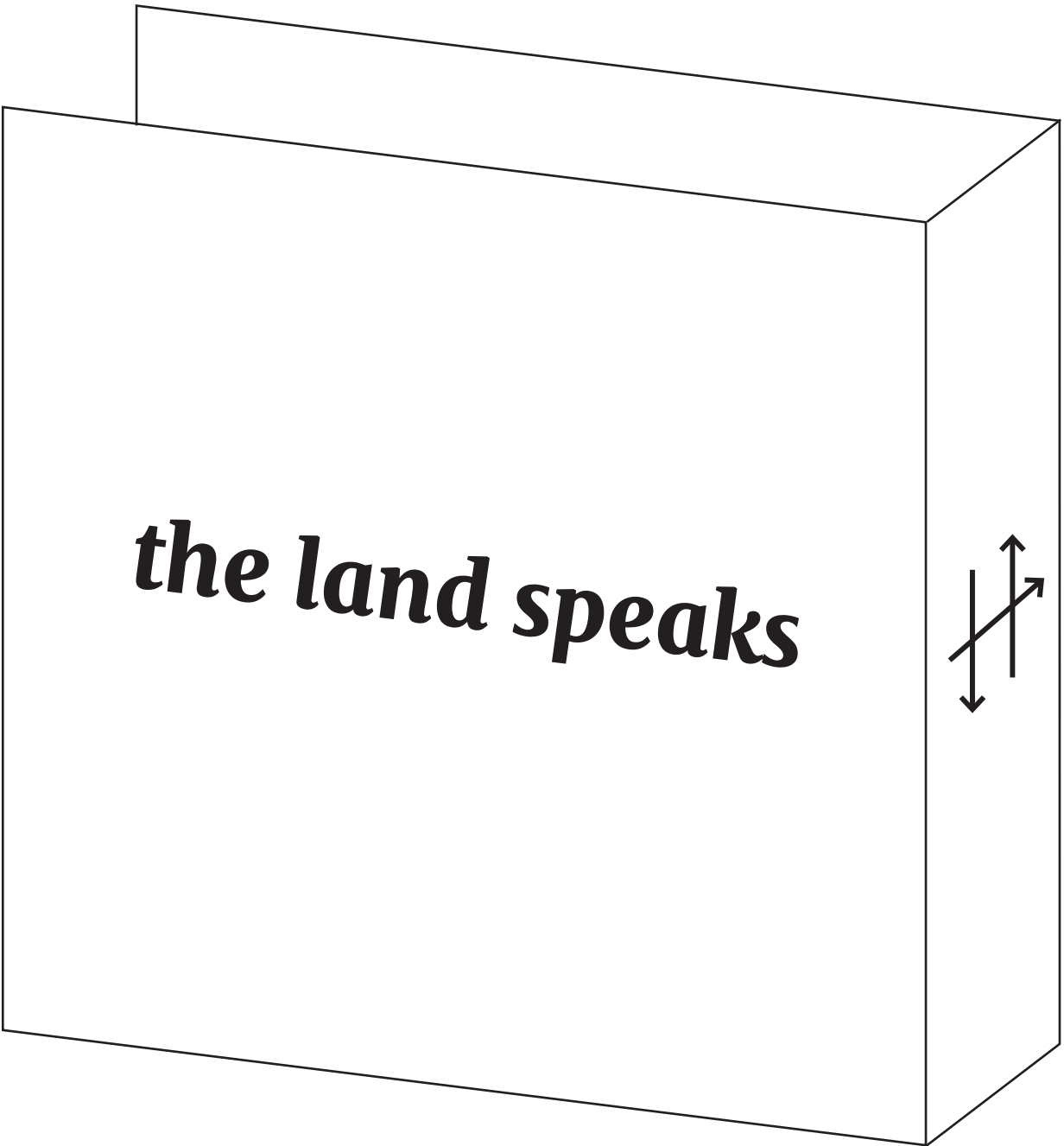
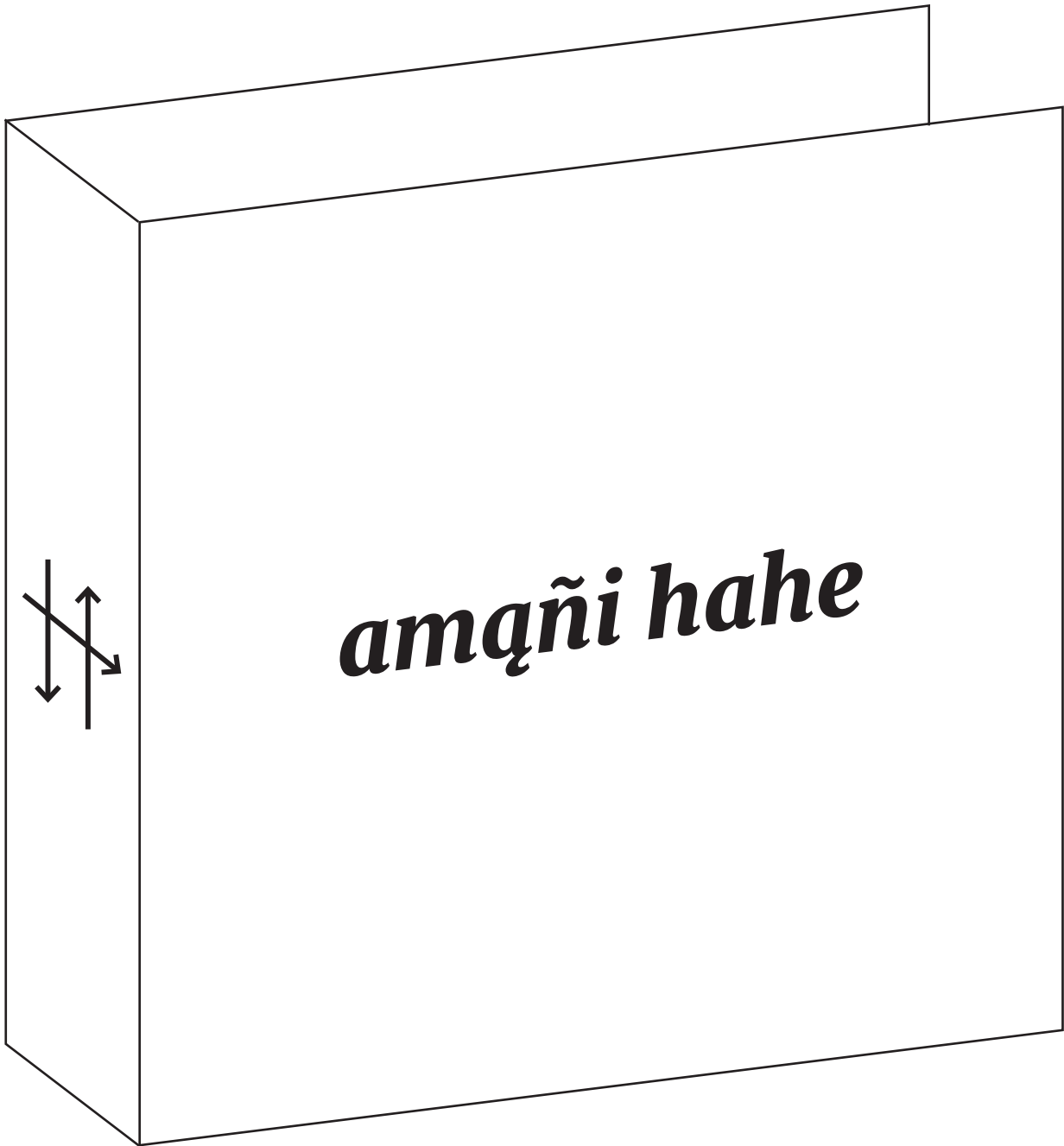


Structure

Board-formed Concrete







VI. FEEDBACK AND QUESTIONS

Monacan Indian Nation Tribute Park at Southwood

Community Meeting • January 2025



LINE AND GRADE